

Tacoma Mountaineers Basic Crewing Course

Welcome to Session 3



Session 3 Topics

- **Quiz for section #2**
- **Weather**
- **Right of Way Navigation Rules**
- **Tides and Currents**
- **Nautical Charts, GPS and Aids to Navigation**
- **Future Sailing opportunities in region**

Quiz from Session 2

Jeopardy

The Lightning Round!

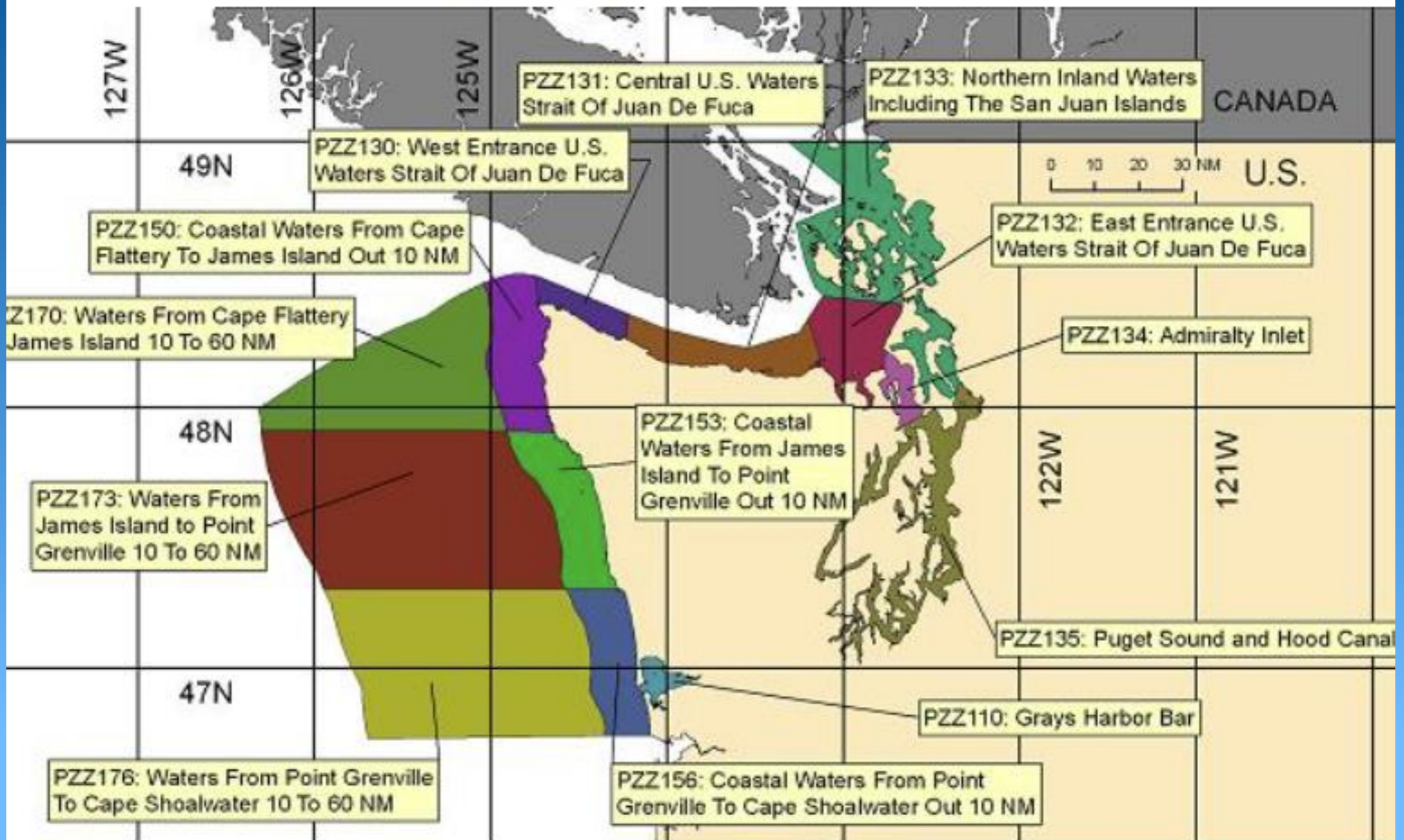
Weather

- **There is no such thing as bad weather, just inappropriate clothing. (within limits)**
- **Check forecasts before you go- look at wind, temperature, precipitation**
 - **Cancel if wind too high, too cold, or too much rain!**
- **VHF radio weather channels**
- **On-the-water observations**

Weather- Forecasts

- Make sure you check a “marine” forecast that includes wind predictions
- National Weather Service, Seattle has lots of great info - <https://www.weather.gov/marine/sewmz>
- Select the zone/area

Coastal Marine Zone Forecasts by the [Seattle, WA Forecast Office](#) - click on the area of interest



FZUS56 KSEW 201627
CWFSEW
Expires:202302210130;;749584

Coastal Waters Forecast for Washington
National Weather Service Seattle WA
827 AM PST Mon Feb 20 2023

Inland waters of western Washington and the northern and central
Washington coastal waters including the Olympic Coast National
Marine Sanctuary

PZZ135-210130-
Puget Sound and Hood Canal-
827 AM PST Mon Feb 20 2023

...SMALL CRAFT ADVISORY IN EFFECT THROUGH TUESDAY AFTERNOON...

.TODAY...S wind 15 to 25 kt becoming SW 20 to 30 kt in the
afternoon. Wind waves 3 to 5 ft. Rain in the morning then a
chance of rain in the afternoon.

.TONIGHT...SW wind 20 to 30 kt. Wind waves 3 to 5 ft. A chance of
rain.

.TUE...SW wind 15 to 25 kt. Wind waves 2 to 4 ft. Rain likely in
the morning then rain in the afternoon.

.TUE NIGHT...N wind 5 to 15 kt becoming 10 to 20 kt after
midnight. Wind waves 1 to 3 ft.

.WED...N wind 15 to 25 kt. Wind waves 2 to 4 ft.

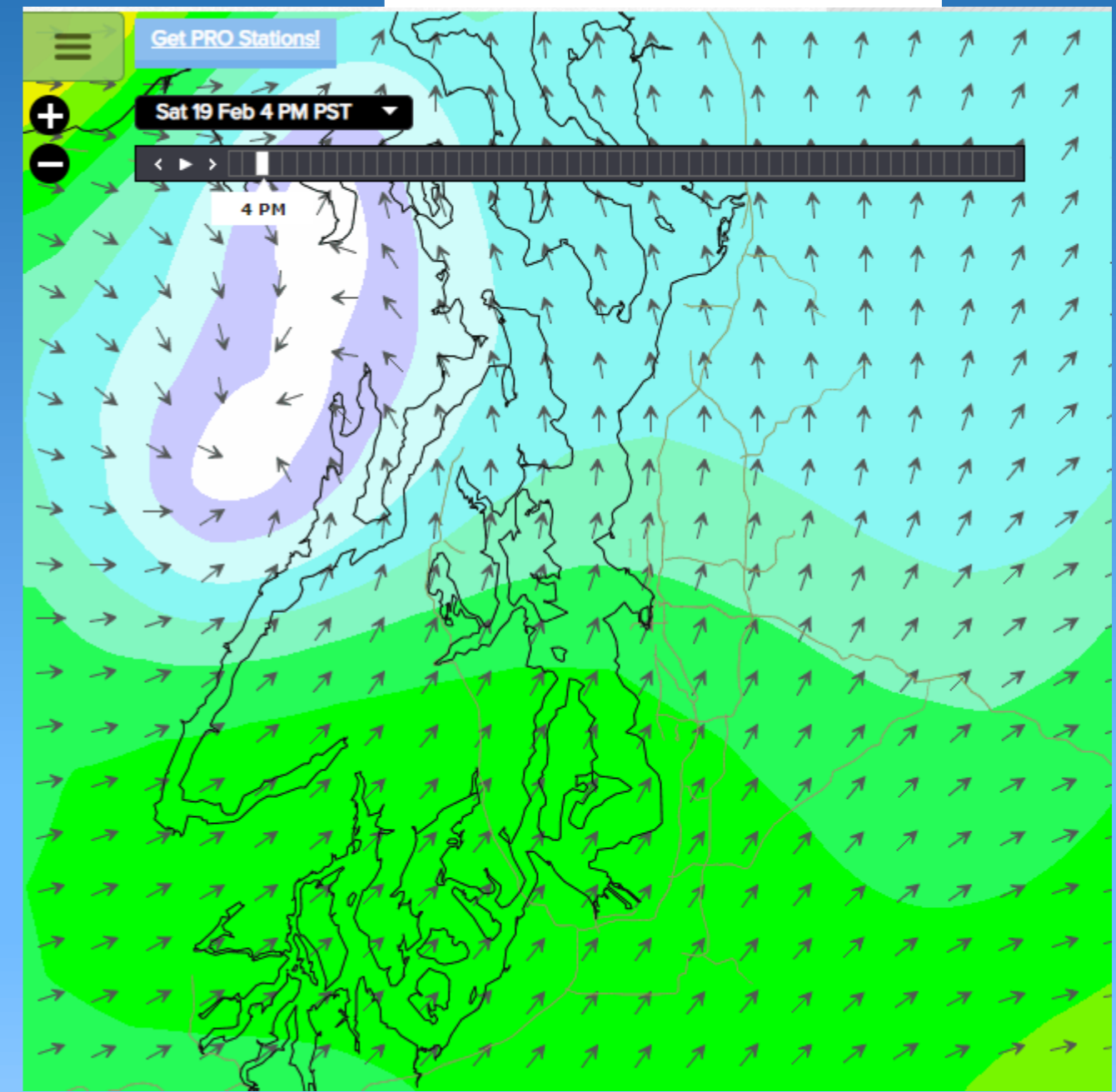
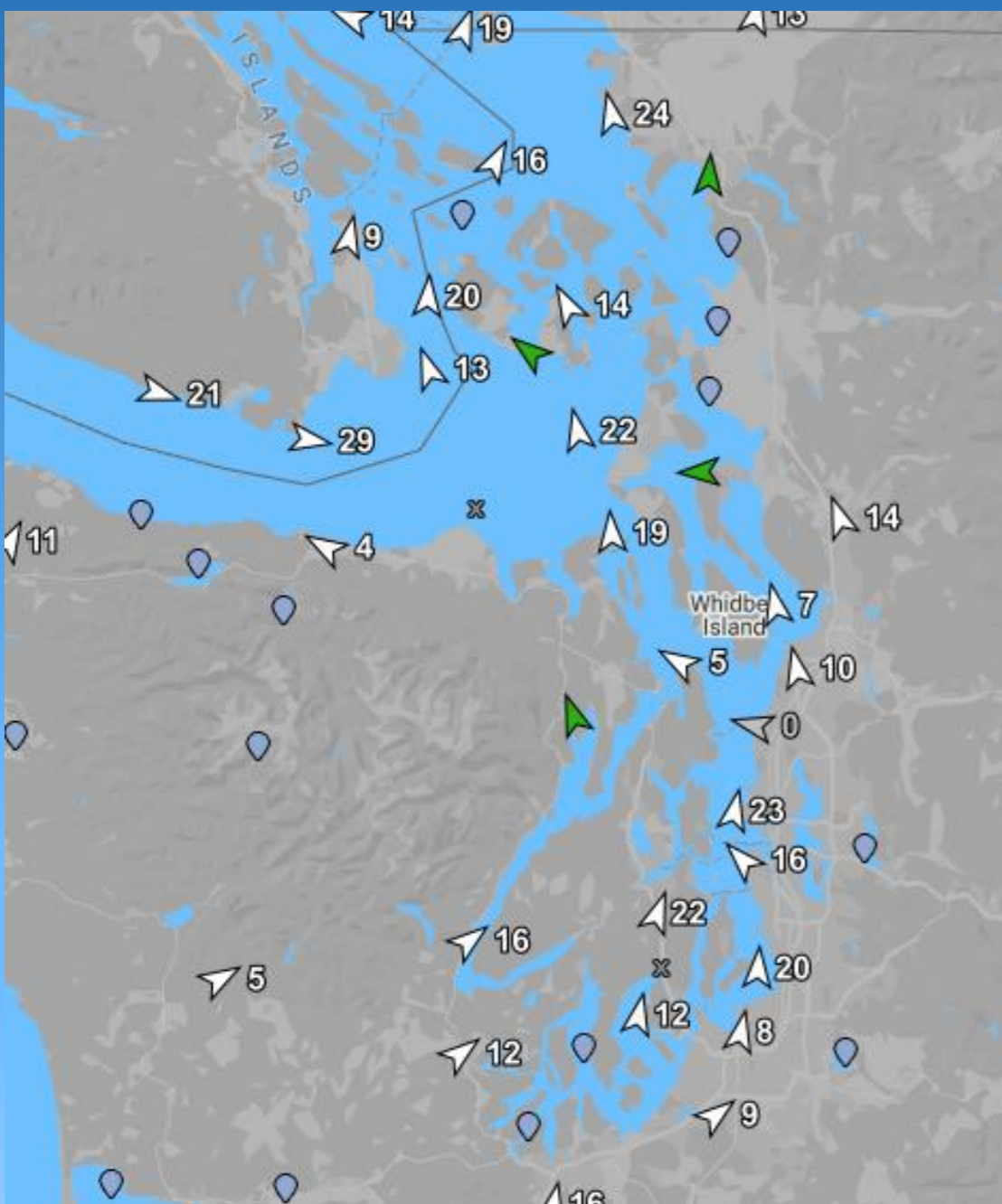
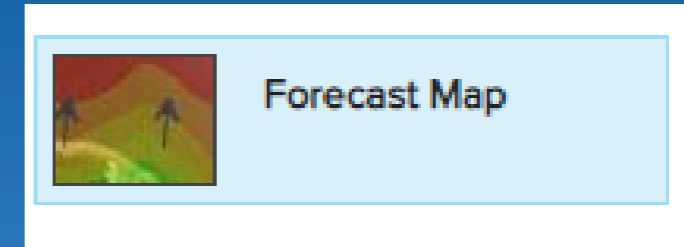
.WED NIGHT...NE wind 10 to 20 kt. Wind waves 1 to 3 ft.

.THU...NE wind 15 to 25 kt easing to 5 to 15 kt. Wind waves 2 to
4 ft subsiding to 2 ft or less.

.FRI...NE wind to 10 kt becoming light. Wind waves 1 ft or less.

Weather Apps : Sail flow

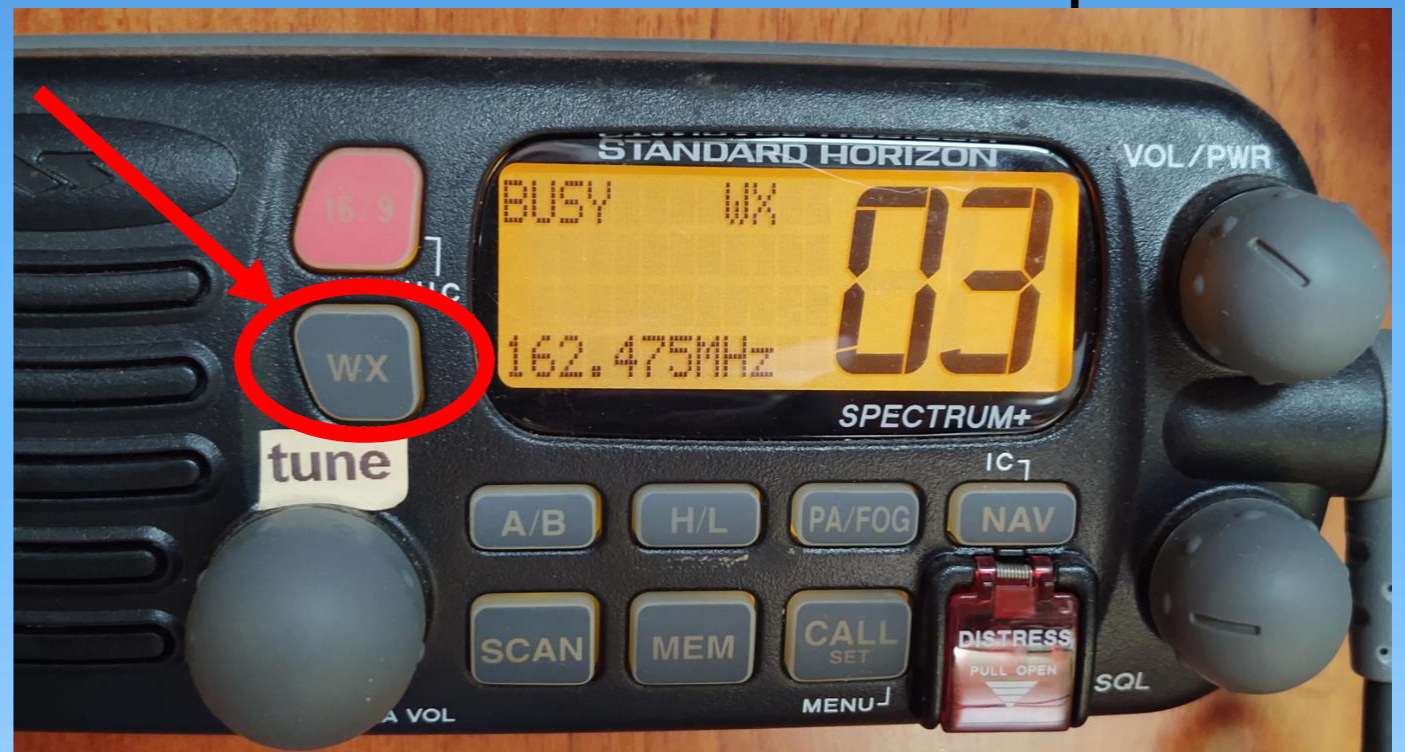
Live and Forecast Wind Conditions



Weather VHF Radio



- VHF radios have “WX” button to switch to weather radio
- Synopsis, forecasts and up to the minute conditions and site observations
- Can even listen at home via NWS website or tablet/smartphone app



Real Time Weather Radar

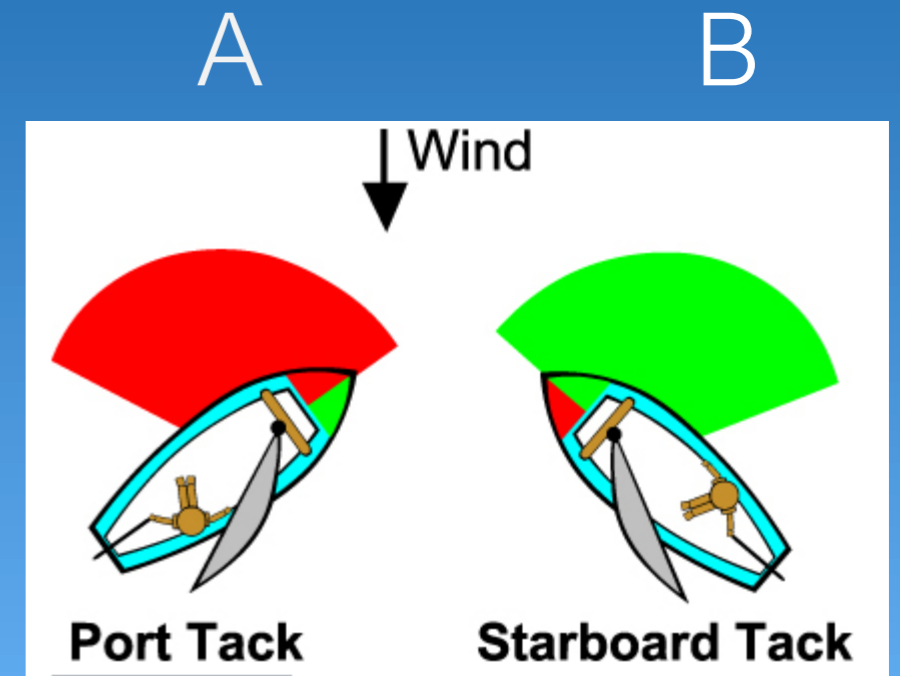


Basic Navigation Rules



Starboard Tack over Port Tack

- Vessel A is on a port tack so is the give-way vessel
- Wind coming in on Port side
- Vessel B is on a starboard tack so has right of way
 - Wind is coming in on Starboard side



Leeward Vessel over Windward Vessel

- Vessel closest to the wind is the give-way vessel and must stay clear of the vessel to leeward



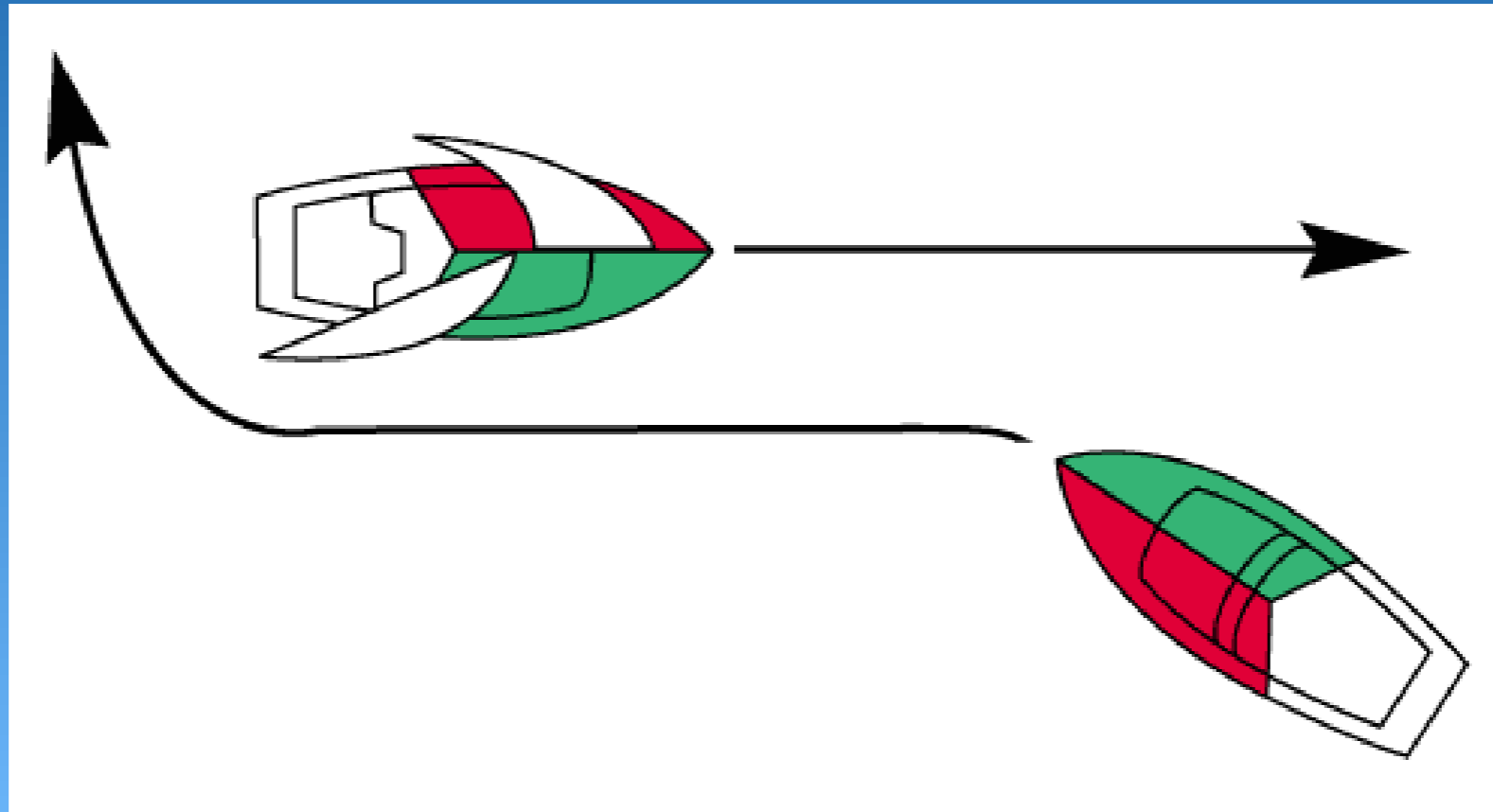
Overtaken Vessel over Overtaking vessel



- No, the bigger boat does not have rights over the smaller boat!

© Michael Brunk / nwlens.com

Sailboat over Powerboat



- EXCEPT - a sailboat under power, even with sails up, is considered a powerboat!



Stay Clear of Large Vessels

Commercial vessels have right of way

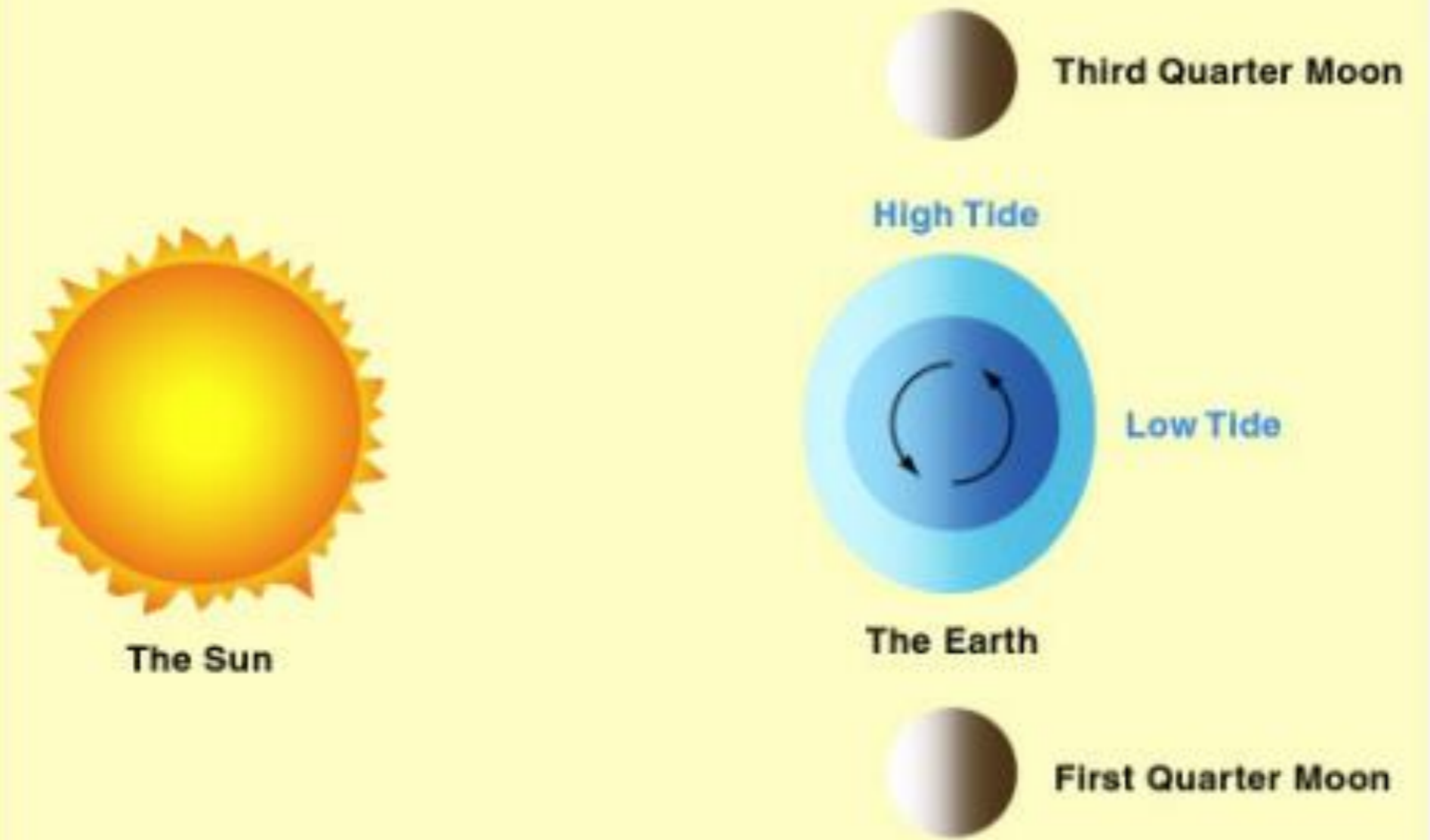
Questions?



10 Minute Break

Tides and Currents

- **Tides are the vertical movement of water –**
 - **rise and fall**
- **Gravitational pull of the moon drags a “bulge” of water around the globe**
- **Currents are the horizontal movement of water -**
 - **ebb and flood**
- **Currents in Puget Sound are primarily caused by the tides**



Tides and Currents

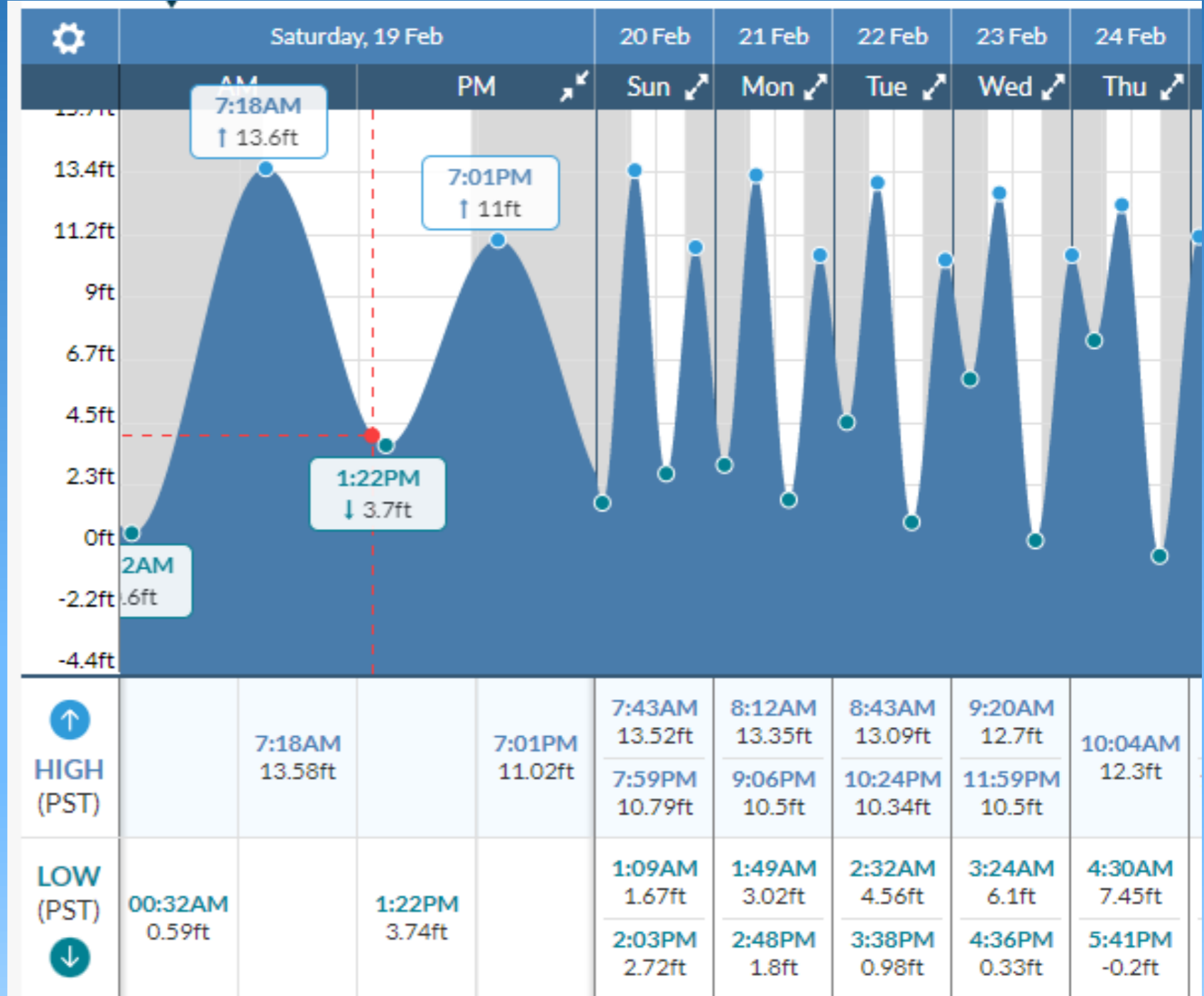
Understanding a Tide Chart



 Tides by country

Tide Times for Tacoma Narrows Bridge

 Lat Long: 47.27° N 122.55° W



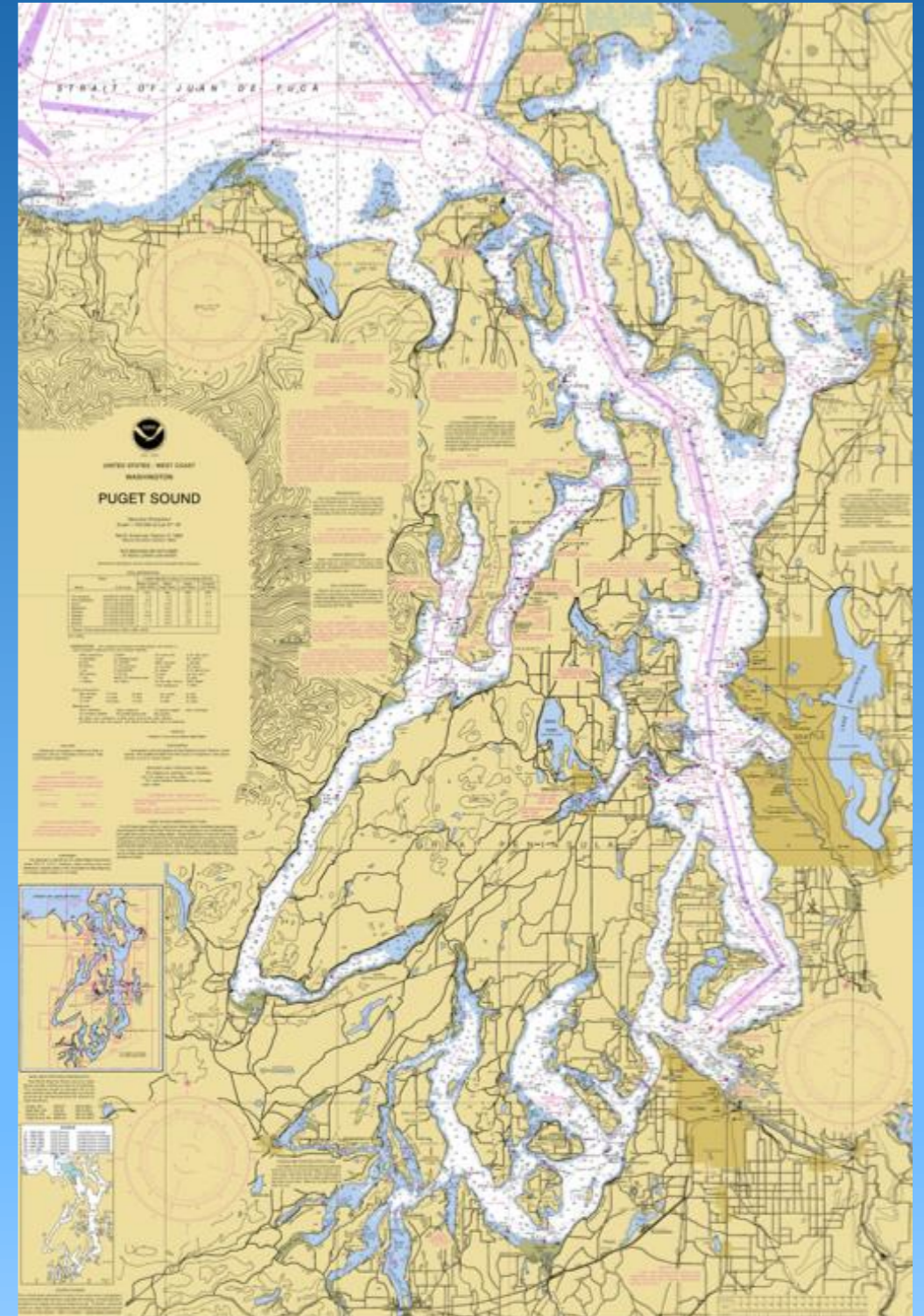
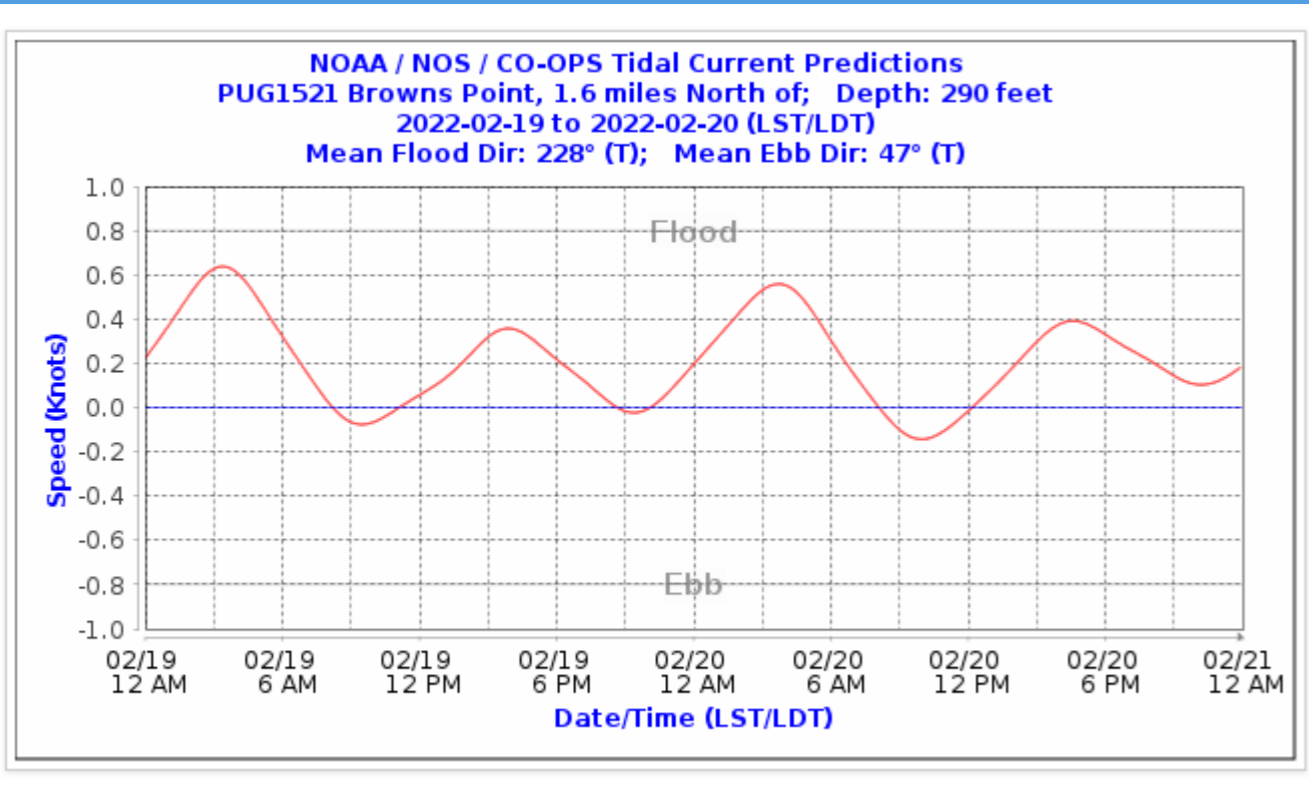
Smart Phone Apps also available

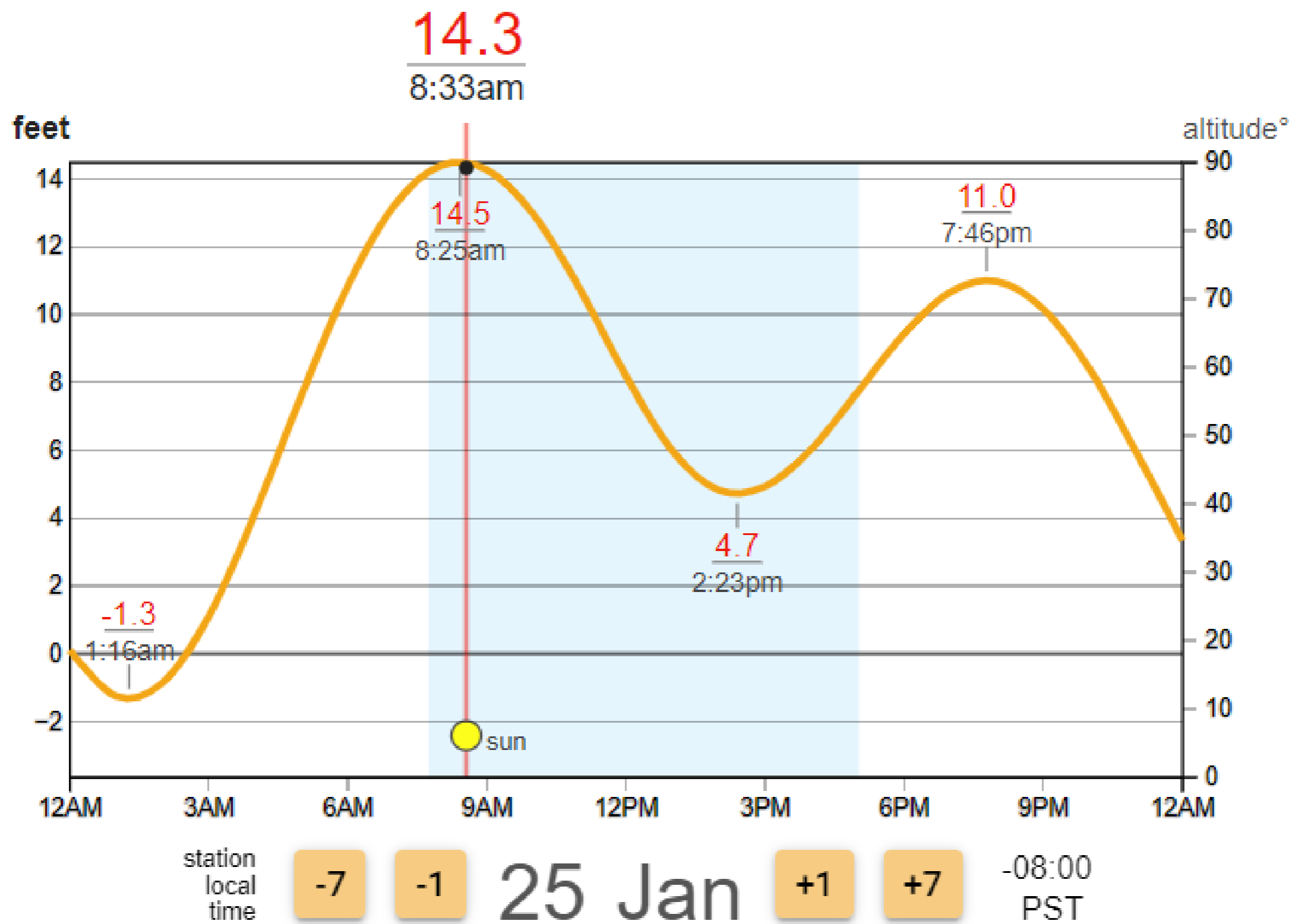
Tides and Currents

Understanding a Current Chart

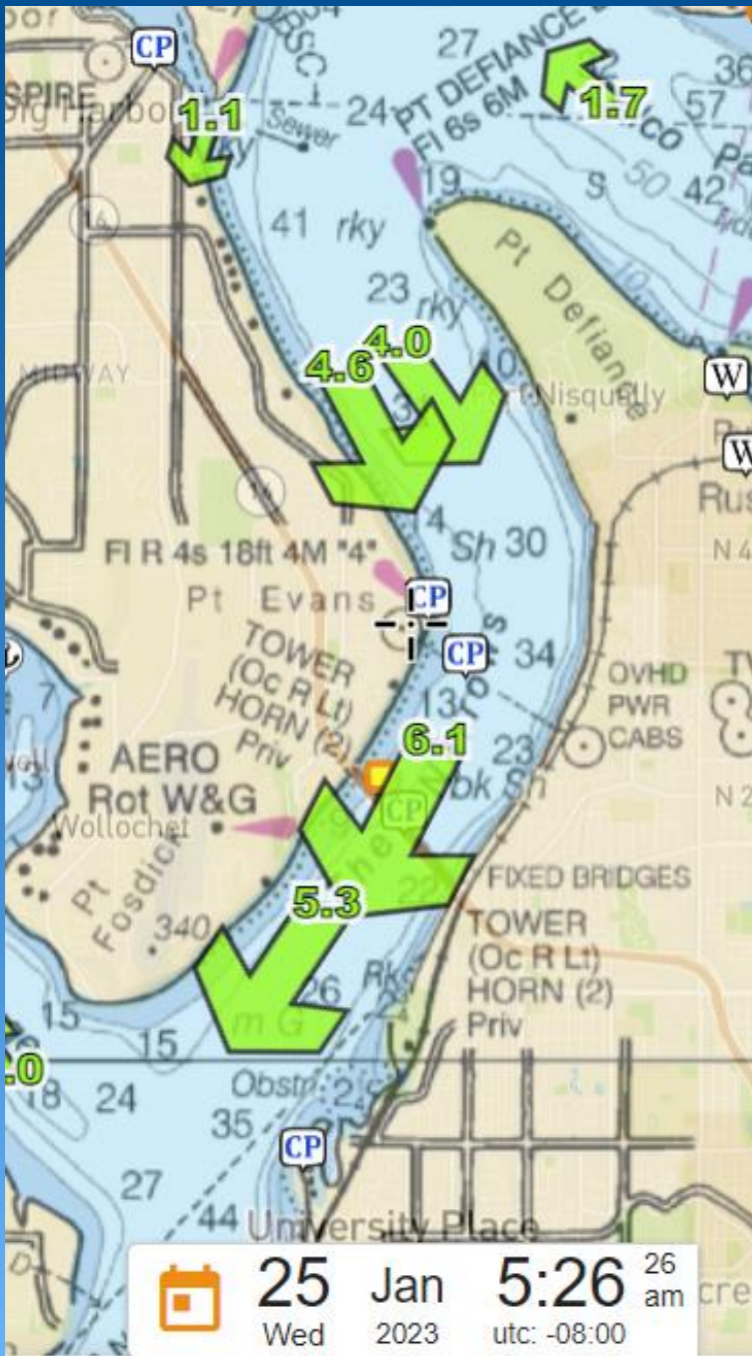
As water flows into Puget Sound from the Strait of Juan de Fuca tides “rise” and currents “flood”

Creates substantial currents off Tacoma

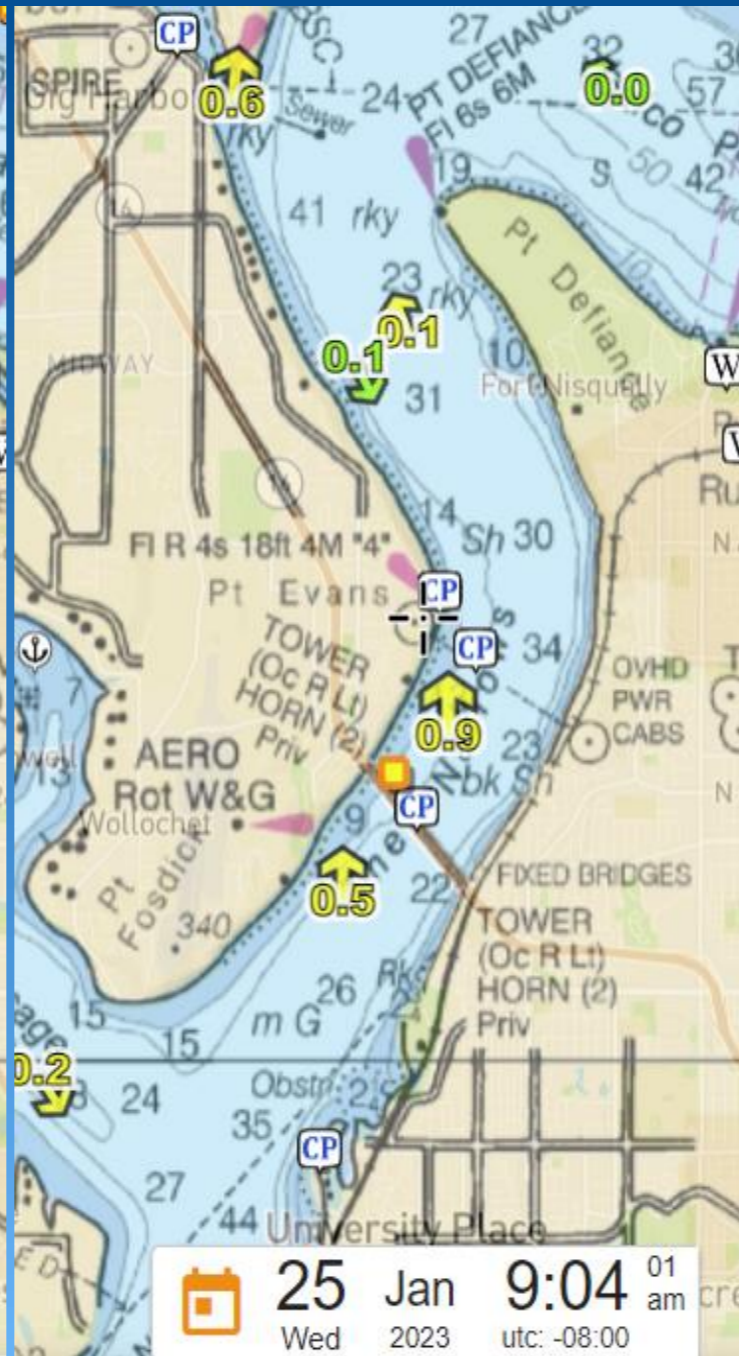




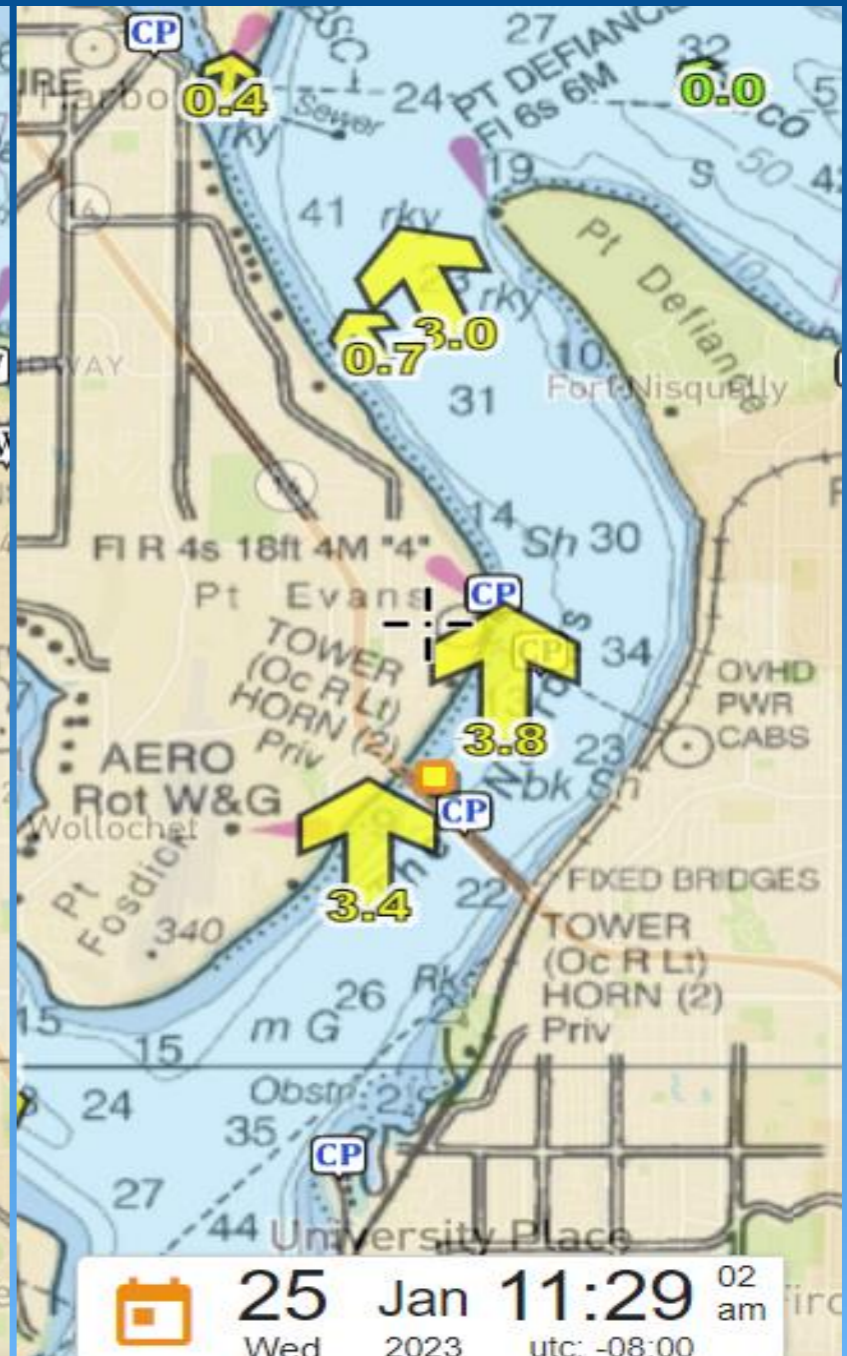
Tidal Cycle



Max Flood



Slack



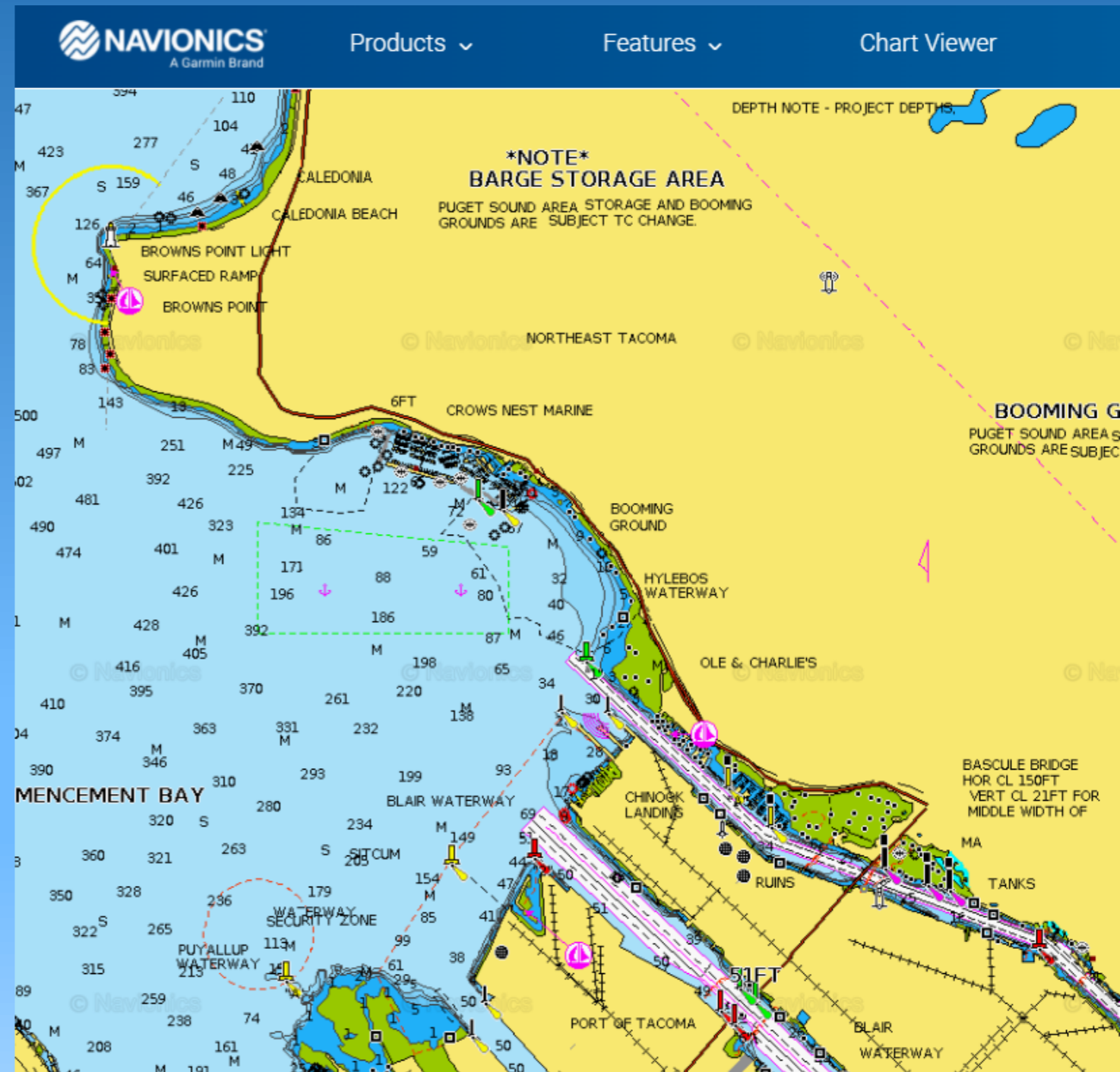
Max Ebb

Nautical charts & GPS Navigation aids

★ Apps to view electronic charts on

- computer
- chart plotter
- tablet
- smart phone

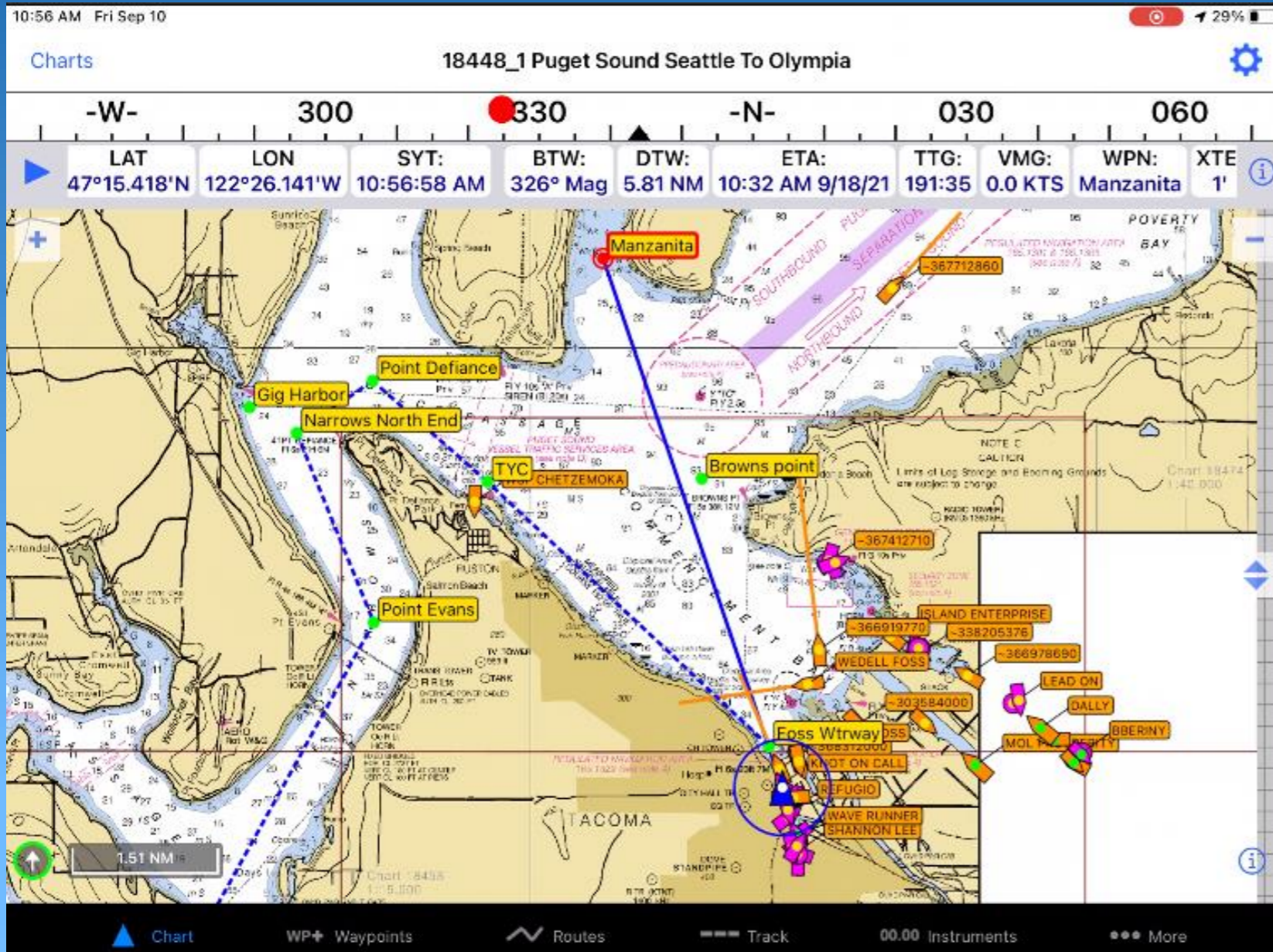
★ Example Apps: Navionics



The Wonder of GPS & Automatic Identification System (AIS)

GPS & AIS allows the chart plotter to show:

- Vessel position
- Vessel course and speed
- Distance to and arrival time at a waypoint
- Relationship to other vessels around your boat (thanks to AIS)

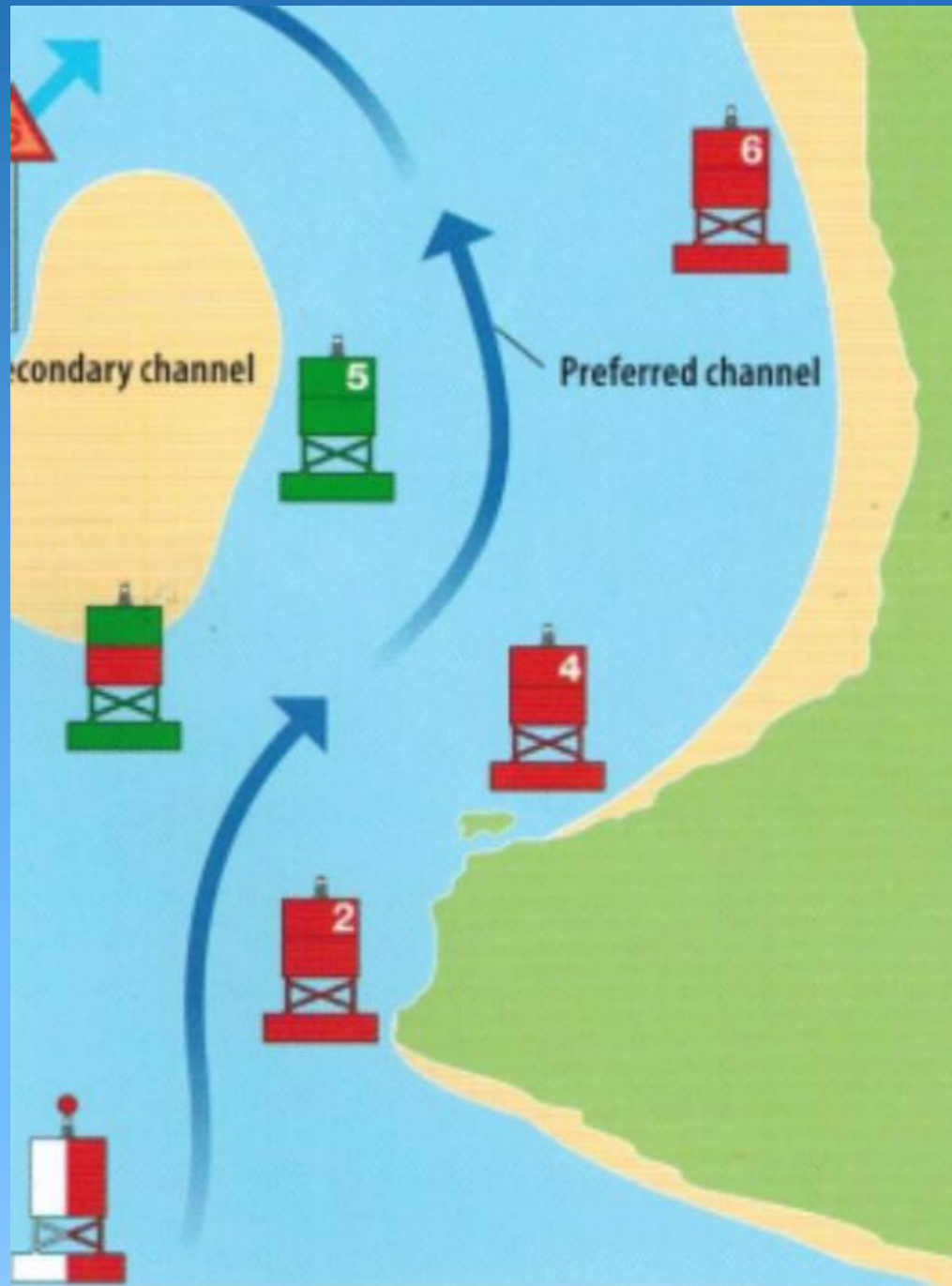


Aids to Navigation Buoys, Daymarks

- Fixed vs floating
- Lighted vs unlighted
- Which one are you next to?
- What is the current doing?



Aids to Navigation



To Remember,
when coming into a
harbor or channel
Red, Right,
Returning

Local Area Sailing Opportunities



CYCT Tacoma Wind Seekers Racing

- Summer Races Wednesday nights
- Race on numerous Saturdays all winter
- Boats always looking for crew
 - CYCT Website <https://cyct.com/racing/>
 - Crew Meetup tab
 - “Tacoma Sailboat Racing Crew” **Meetup** Group





Lido 14 Fleet CYCT Tacoma



- Corinthian Yacht Club Tacoma (CYCT)
- Great sailing boats
- Very affordable
- Trailerable, fleet has dock storage at Tyee Marina
- Active fleet- can race, or just learn to sail

Email Contact: lidofleet@cyct.com





Hobie Cat Fleet 95 Seattle



- Great sailing, light, trailerable boats
- Fast!! Fun! Trap out and fly!
- Very competitive one design fleets for racing
 - H16, H18, Hobie Tigers
- Races all around region-
 - camp out and sail in great locations
- Contact <https://www.facebook.com/HobieFleet95>





TYC Cal 20 Fleet

- Tacoma Yacht Club (TYC) Cal 20 fleet
- Great Sailing boats- affordable and trailerable
- Can be dry-sailed at TYC- pulled out by crane
- Requires TYC membership
- Contact: <https://tacomayachtclub.org>



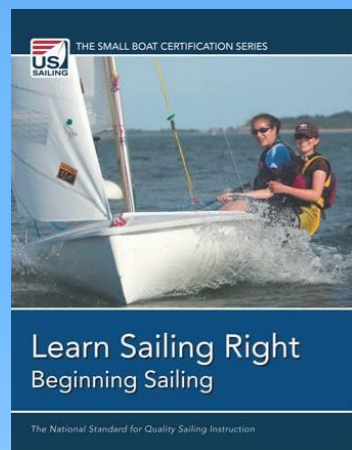
Seattle Sailing Club



- Multiple Boats to use
- Various Membership Levels
- Located in Seattle at Shilshole Marina
- See Webpage for more info

Renton Sailing Center

- Non Profit community sailing center - provides classes, races and recreational sailing
- Location: Gene Coulon Park, South end of Lake Washington
- Annual Membership: open to public, 1 to 3/31, skill ratings (beginner, intermediate, advanced & keelboat skills tests)
- Fleet: Dinghy's (RS Visions, RS Quest, Capri 14, Hobie 14, Hunter 170), Keelboat's (Ranger 24, Catalina 27, J/80)



Webpage: <https://www.rentonsailing.org/>
Facebook: Renton Sailing Center





Star Fleet- Olympia

South Sound Sailing Society – (SSSS) Budd Inlet **Star** Fleet

22' boats, trailerable, past olympic class

Active and fun fleet

Contact : <http://www.ssssclub.com/stars/>



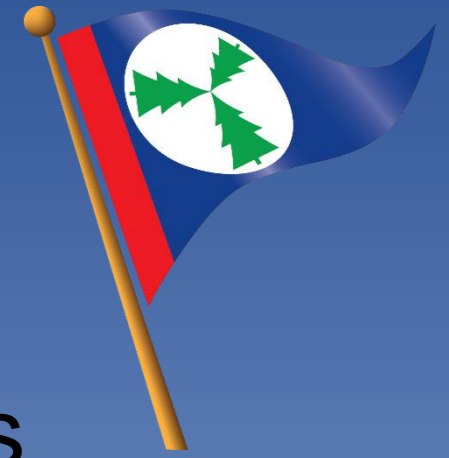
Lake Washington Sail Sand Point

Classes, Boats for rent, and boat storage

- Storage for hand-launchable, non-motorized sailboats, canoes, kayaks, and paddleboards.
- Contact: <https://www.sailsandpoint.org/>

		Min People	Max People	Quantity
Sailing	Optimists (Optis)	1 kid	2 kids	6
	Lasers	1	1	9
	Flying Juniors (FJs)	2	2	12
	RS Quests	2*	4	6
	2.4 Meter**	1	1	2
	Hobie Waves	1	4	12
	Hobie 16s (285lbs min.)	2	4	2
	Windsurf Boards***	1	1	6

Three Tree Point Yacht Club



- Spring, Summer & Fall Races - Thursday nights
6:30 Start – near Des Moines Marina fishing pier
- Race on numerous Saturdays all winter
- Boats always looking for crew.
- TTPYC Website: ttpyc.org/racing
 - Race Crew Sign up tab



Puget Sound Sailing Institute & PSSSI Sailing Club



- **Certified ASA Sailing School** with classes in Seattle, Tacoma, Des Moines, Olympia, and Anacortes (ASA 101-118)
- **Sailing Club** with boats in Tacoma Tye Marina (3), Des Moines Marina (2), and Seattle Bell Harbor Marina (2)
 - Three membership levels available (see website for more information)
- www.pugetsoundsailing.com Facebook: PugetSoundSailing Instagram: PugetSoundSailingInstitute





Thanks for joining our class!

See you on the water...